

Product Name

Ezi Cover Acrylic Undercoat

Product Description

Ezi Cover Acrylic Undercoat is economical acrylic sealer undercoat for interior and exterior use.



Product benefit

- Very good opacity and coverage.
- Good alkali resistant.
- Improves appearance of top coat.
- Does not chalk and can be applied on adequately cured fresh plaster.
- Provides excellent adhesion to top coat emulsions.
- Prevents peeling off of top coat emulsions.

Product features

Available Packs	1 Lit, 4 Lit, 10 Lit, 20 Lit
Coverage	Coverage - 1-2 Sqm/lit/coat* *Actual coverage may vary from the quoted coverage due to factors such as method and condition of application and surface roughness and porosity.
Colour Options	White / other colours can be tinted for custom requirements.

Areas of Application

The areas of application are interior/exterior cement surfaces, plasters, ceilings, paper faced wall boards, timber, brick wall, fibre cement boards, asbestos sheets and existing painted surfaces.

How to Apply

Pre Painting Steps



New masonry surfaces must be allowed to cure completely. It is recommended to allow 28 days as the curing time for new masonry surfaces.



Surface should be free from any loose paint, dust or grease. Growths of fungus, algae or moss should be removed by wire brushing and water. In case of areas having excessive dampness use Asian Paints Damp Block to limit further dampness. When the underlying surface exhibits chalkiness, in spite of thorough surface cleaning, use APCO Coatings Exterior Sealer.



For filling cracks use APCO Coatings interior/exterior wall putty.

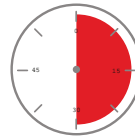


Use APCO Coatings Interior/ Exterior Putty or white cement and fine sand in the ratio 1:3. For interior surfaces or substrates that are subjected to continuous see page or dampness, kindly use APCO Coatings SmartCare Damp Block before the top coat application.

Paint Application / System

Stir the contents thoroughly before and during use. Apply one or two uniform coats with light sanding in between using 220- grit sandpaper. Dust off and follow with two finish coats.

Drying Time



Touch Dry	30mins
Recoating Time	2-3 hrs

Finish - Type / Category

Interior /Exterior - Economical Undercoat.

Additional Information

Method of application	Brush, Roller and Spray
Flammability	Non Flammable
Safety Precautions	<ul style="list-style-type: none">• Do not apply when surface temperature is below 10°C.• Provide adequate ventilation during use.• Keep out of reach of children.• Check cross cut adhesion of old paint before repainting.• In normal condition, a week's curing is required to develop full hardness & resistant properties.• Avoid exposure of new paint film to steam for 48 hours and to washing and scrubbing for 7 days.

DISCLAIMER:

Although the facts and suggestions in this publication are based on our own research and are believed reliable, we cannot assume any responsibility for performance or results obtained through the use of our products herein described, nor do we accept any liability for loss or damages directly caused by our products. The user is held to check the quality, safety and all other properties of our product prior to use. Nothing herein is to be taken as permission, inducement or recommendation to practice any patented invention without a license.

 <p>APCO BRILLIANT PAINTS, BRILLIANT COLOURS (Division of Asian Paints (SP) Limited)</p>	<p>FACTORY: P.O. Box 694, Lautoka, FIJI. Ph: 679 6662799; Fax: 679 - 6663959 Email: contact.fiji@apccoatings.com</p>	<p>SUVA OFFICE: P.O. Box 4202, Samabula, Suva, FIJI. Ph : (679) 3371267/68; Fax: (679) 3371269 Email: contact.fiji@apccoatings.com</p>
--	---	---